

MY FIRST MINIMAD VIDEO EXPORT

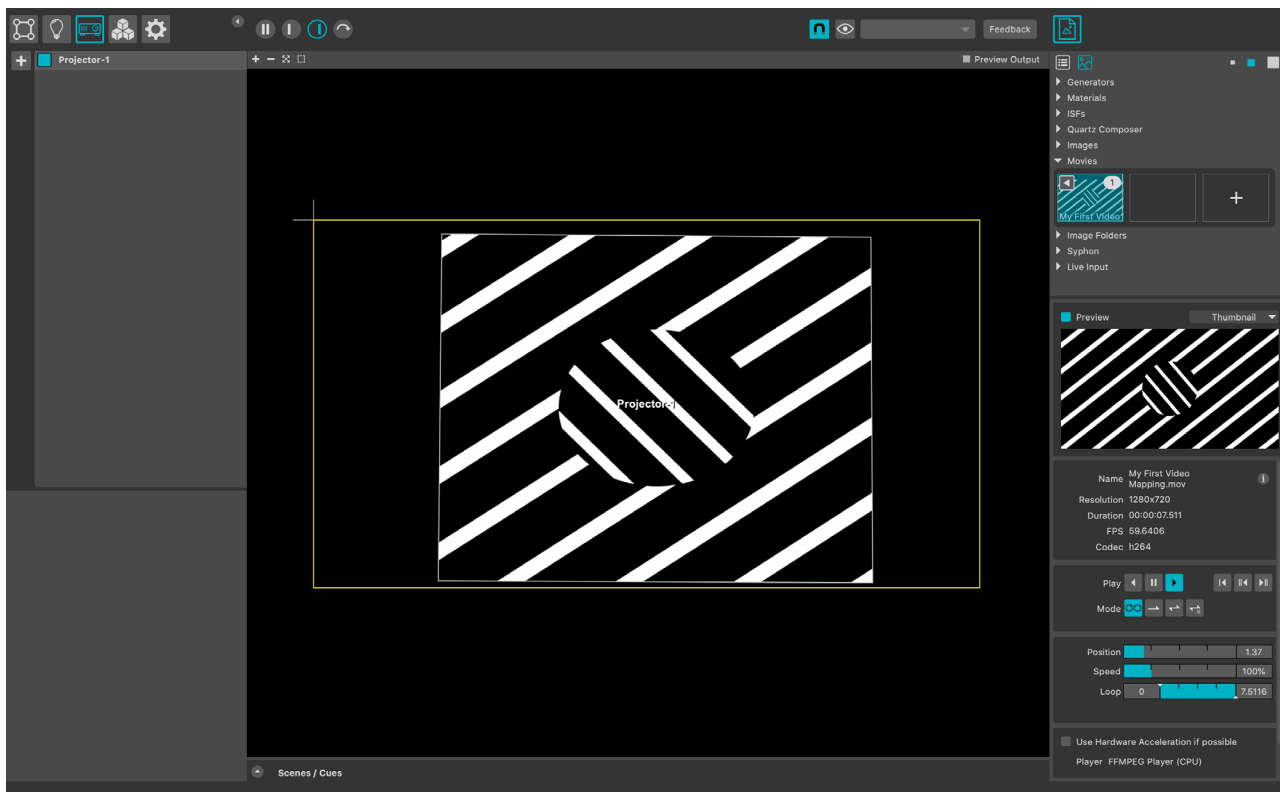
**Find out in this guide how to export
a video project to your MiniMad!**

From the micro-SD card to the export
process we will go through all the
different steps necessary for your first
MiniMad Video export



1. The Project

► For this guide we will use the project created during the «My First Video Mapping Guide» : a video mapped inside a photo frame.



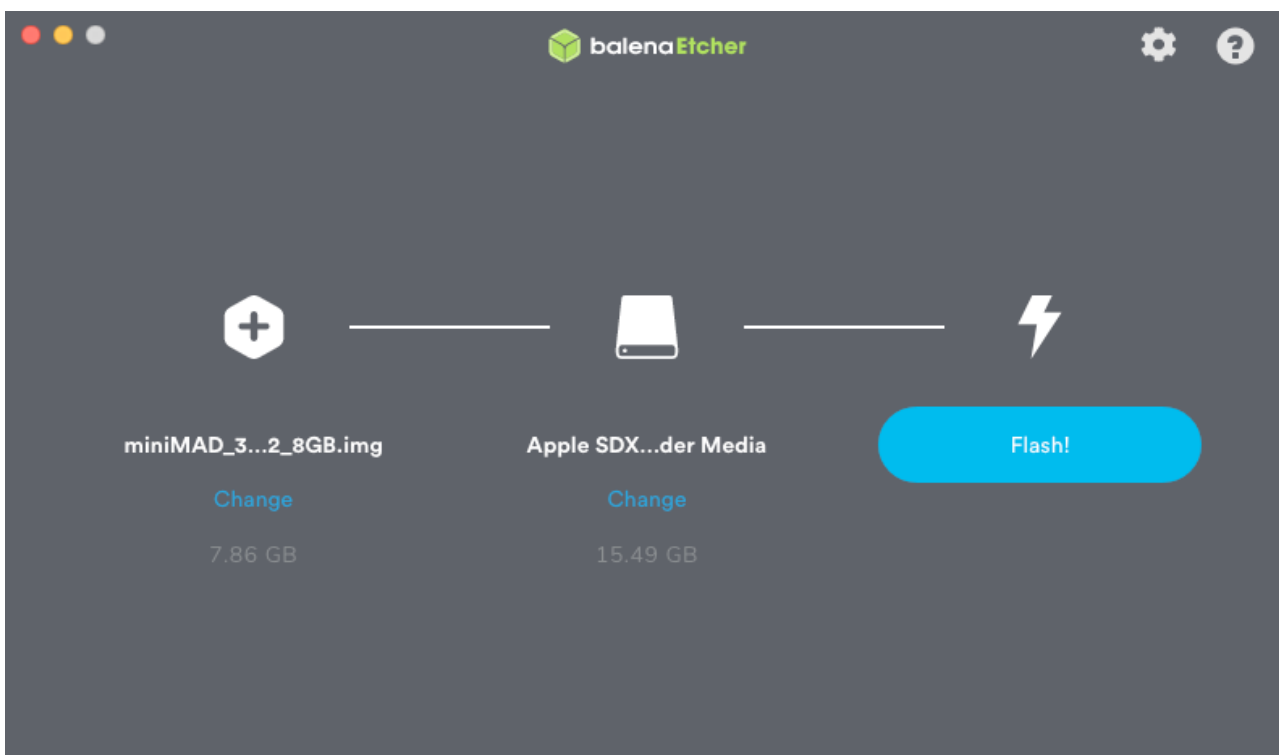
If you are using another project, please note that it must be compatible with the MiniMad to be exported to its SD card: there are some limitations, detailed in the MiniMad User Guide and the MiniMad FAQ.

2. MiniMad SD-Card

MiniMads are always delivered ready to use, which means that the supplied micro-SD card is already activated for the unit.

However, if you need to format the micro-SD card of your MiniMad beforehand or in the future, here is the procedure:

- download the MiniMad 8 or 16gb disk image from the MadMapper website, in the Downloads section of your user account.
- download the Etcher application from this site: <https://www.balena.io/etcher/>
- launch the Etcher application, select your previously downloaded disk image, select your MiniMad's SD card as the target, then flash.



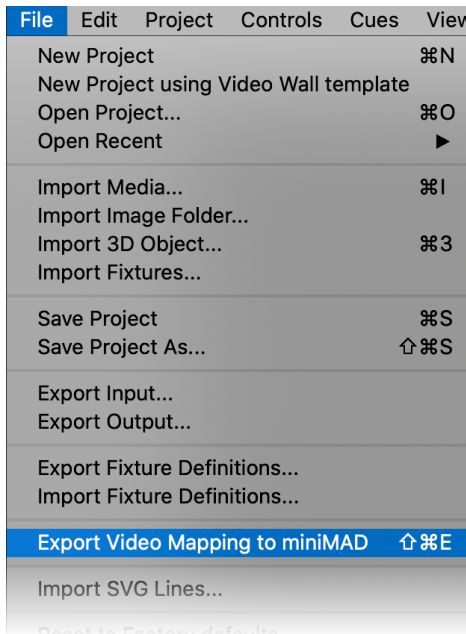
The image disk is huge - if the downloaded file doesn't work it's mostly due to a download fail at some point, you'll have to download the image disk again.

The micro-SD to SD adapter supplied with the MiniMad also allows you to connect your micro-SD card to your computer more easily.

Keep in mind that if you format your SD-card, you'll need to re-activate it with your MiniMad unit, through the authorization process (pressing the three buttons).

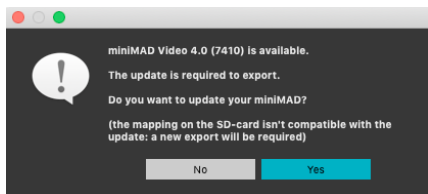
Another tip is that if the red light blinks quickly, you need to activate your SD-card by pressing Red Yellow and Blue buttons successively.

3. Export Process

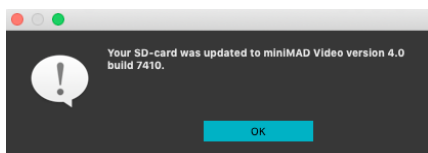


- As our project is already completed (see My First Video Mapping Guide) we can go directly to :

File Menu / Export Video Mapping to MiniMad



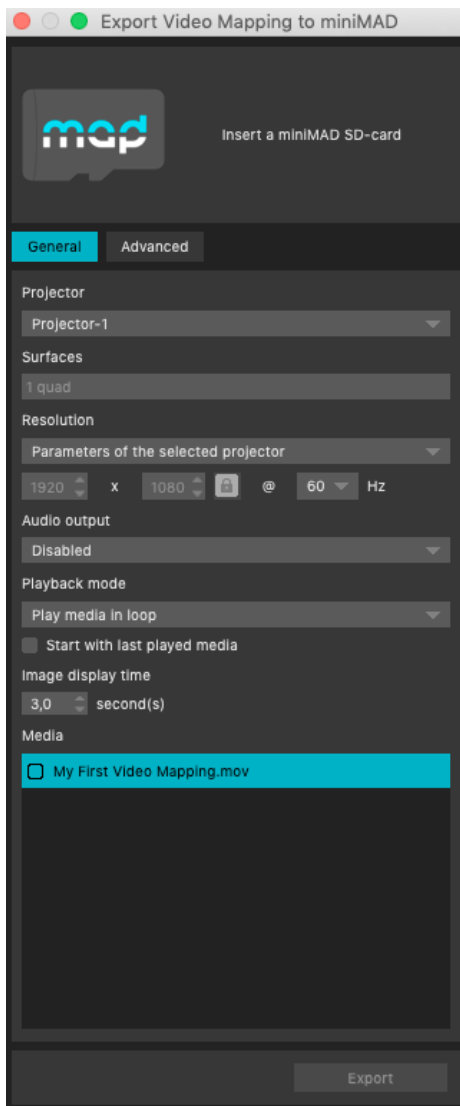
- The export window will then appear and you may first get a notification offering you to update the MiniMad Video version of your SD card.



- By clicking Yes, MadMapper will update your SD card and will then confirm the operation.

Click Ok to set up your export in the General and Advanced sections.

► General



► **Projector** : you can select from the drop-down list the target Projector for your export (if you have several projectors in your project).
In our case it will be our only «Projector-1» projector.

Surfaces : as you can see on the screenshot, we have only one surface to export, «1 quad».

Resolution : you can either choose the resolution of the previously selected projector, or a standard resolution from the drop-down list, or a custom resolution.
It is also possible to lock the resolution and change the frequency in Hz.

In our case we will keep the settings of our «Projector-1»: 1280x720 at 60Hz.

Audio output : several options are available, audio-jack, HDMI or disabled, in our case.

Playback mode : several modes are available,

- Play media in loop (the one we will choose for this guide).
- Repeat media list.
- Repeat media list randomly.
- Play media once and blackout.
- Play media once and freeze.

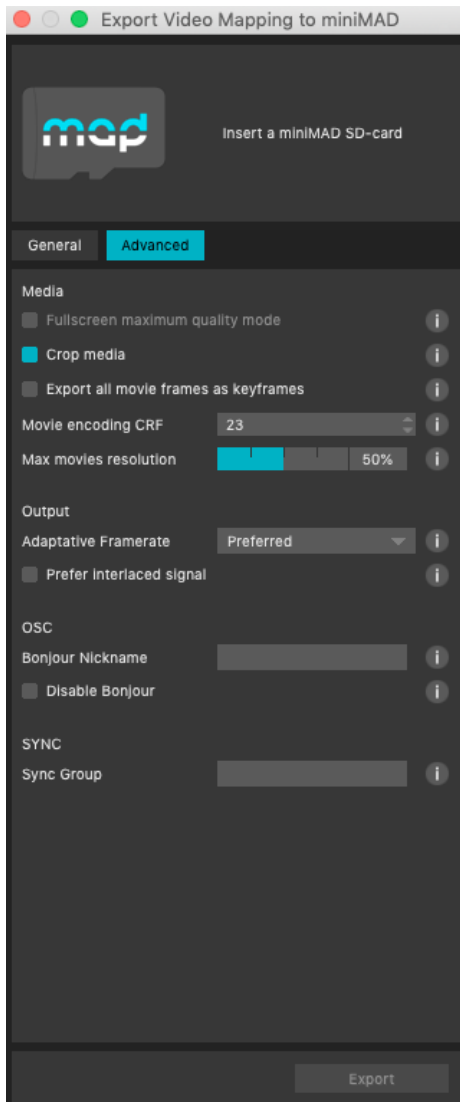
A Start with last played media option is also available.

Image display time : this value can be edited in seconds.

Finally, the **Media** section allows us to view and select the media(s) that will be exported to the MiniMad's micro-SD card.

As you can see on the screenshot we will only export our video «My First Video Mapping.mov», mapped inside the photo frame thanks to MadMapper.

► Advanced



► Media

Fullscreen maximum quality mode : when exporting a single fullscreen-surface with no image correction, no feathering and no mask, the MiniMad will play the movies directly to the framebuffer, enabling maximum movie quality (up to 1080p30).

Mapping and image controls are disabled in this mode.

Crop media : the exported media will be cropped to the part that's actually used on this projector, in order to maximize their quality and the overall performance of the MiniMad.

Using this option is strongly advised, unless you play to expand or move your surfaces cropping area using the MiniMad.

Export all movies as keyframes : when set, MadMapper will export every movie frames as key frames. This can improve linear animations overall smoothness.

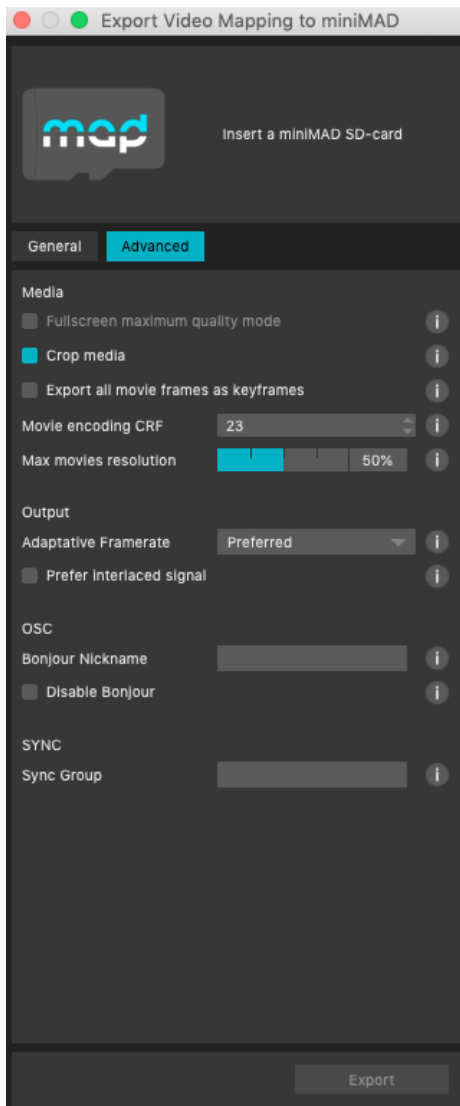
Movie encoding CRF : adjust movies encoding Constant Rate Factor, which is inversely related with the quality. The range of the scale is 0-51: 0 is lossless, 23 is default, and 51 is the worst possible.

A lower value is a higher quality and a subjectively sane range is 18-28.

Consider 18 to be visually lossless or nearly so.

Max movies resolution : this settings is a factor of the maximum supported movie resolution (1080p30) to calculate the actual exported movie resolution.

► Advanced



► Output

Adaptive framerate : sets the framerate of the MiniMad to match the current media, which potentially leads to lower processing and better performance of the Mini-Mad.

However, depending on the movies and output resolution, adaptative-framerate isn't always advised, hence the default "preferred" setting.

Prefer interlaced signal : when set, the MiniMad will use the interlaced version of the selected resolution available.

By default, MiniMad will use the progressive version but it happens to fall on certain displays, capture cards or video-mixers.

► OSC

Bonjour nickname : by default, the MiniMad will declare itself as "MiniMad Video".

The nickname is used to better identify a MiniMad setup amongst others.

When a nickname is specified, the MiniMad declare itself as "MiniMad Video - Nickname".

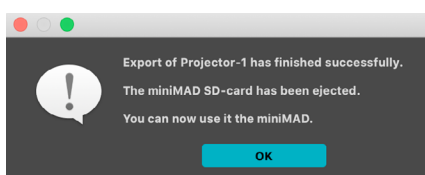
Finally, if the setup consists of several MiniMads exported from the same project, the name of the corresponding projector is added as a suffix "MiniMad Video - Nickname - Projector Name".

Disable bonjour : when checked, the MiniMad will not appear in the list of available OSC input devices (although it will still be available using its IP address on port 1111).

► SYNC

Sync group : only MiniMads within the same Sync Group will synchronize.

- Once you have set up your export settings you can click Export, and once the project is properly exported in to the SD card, MadMapper will warn you and eject the SD card.



4. MiniMad in Use

4.1 Setup



- The project now exported to the Mini-Mad's micro-SD card you can gather all the elements provided to prepare your installation.

You can see on the picture the MiniMad, its power supply, the micro-SD card (with the exported project), the SD card adapter and the HDMI cable that will connect the MiniMad to our video-projector.



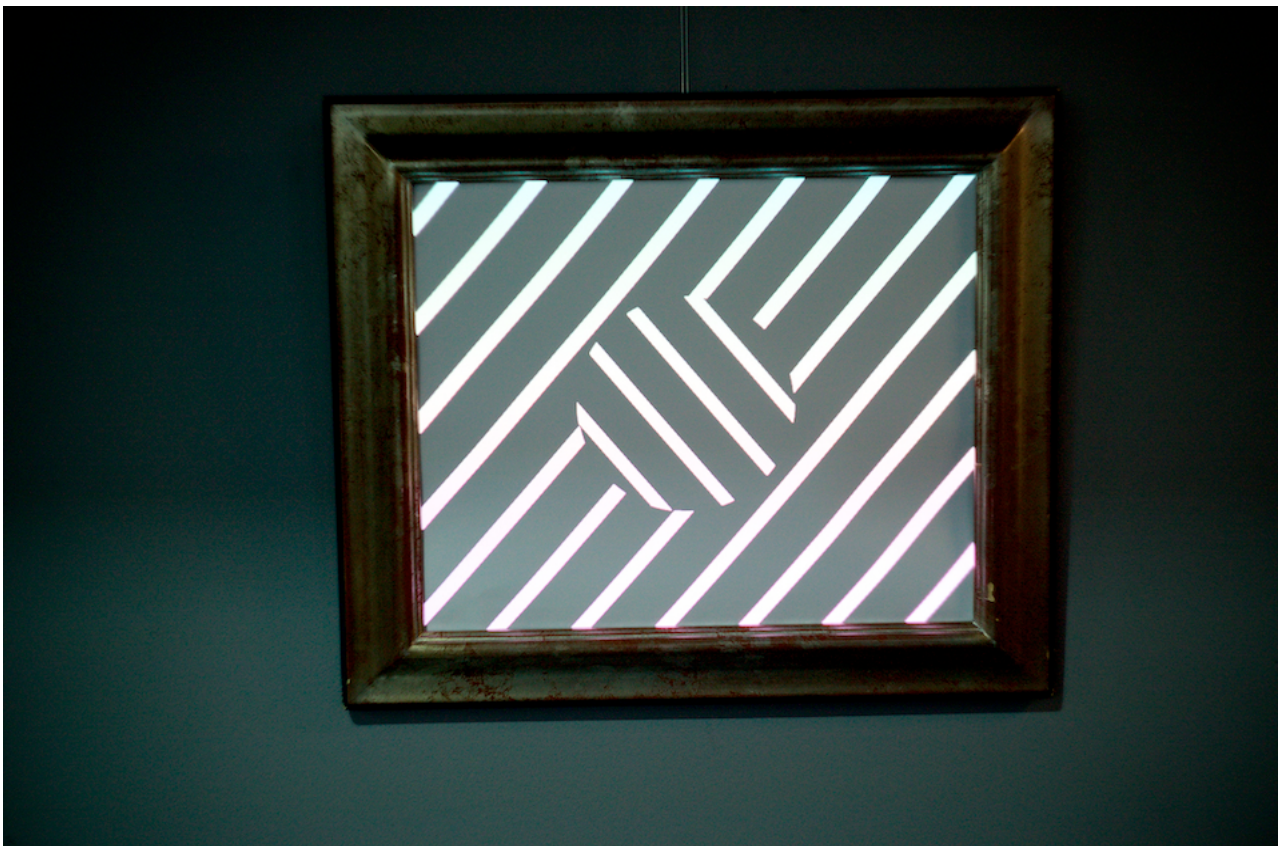
- ① Insert the micro-SD card into the slot provided
- ② Connect your MiniMad unit to the projector with the HDMI cable
- ③ Power up your MiniMad by plugging it into AC power

At start-up the red LED should light up and the green one should start flashing almost immediately (system charging).

Then when the MiniMad starts, three operations will be necessary during the «Welcome to the MiniMad setup process»: you will be asked to press successively the red, yellow and blue buttons of the MiniMad in order to initialize your mapping.

4.2 Et Voilà!

- You don't need your computer anymore: your MiniMad takes care of projecting your mapping



Find more information about the MiniMad in the user guide, the MiniMAD FAQ and our Youtube channel.